

MITEL

SX-200 | MX Controller



Advanced Affordable Communication System for Small to Medium Business

The Mitel® SX-200 Integrated Communications Platform (ICP) provides the reliability and comprehensive features of a PBX, the ease of use and cost effectiveness of a key system, and the productivity-enhancing applications and networking efficiency IP communications. The SX-200 ICP allows you to implement the system you need today, whether this is with traditional or IP Telephony, with the option to add capacity and functionality as your business requirements change. It can be configured as an IP system, TDM system or any combination of IP and TDM. The choice is yours. The configuration is simple.

Physical Dimensions

SX-200 MX Controller

Height	2.625 in (6.66 cm) (1.5 U)
Width	17.75 in (45.1 cm) (19 in rack-mountable)
Depth	18.75 in (46.5 cm)
Weight	15.8 lb (7.17 kg)

Electrical Requirements

Power Supply	Input/Disconnect IEC 320 AC connector
Operation	100 – 240 Vac, 2.5 A max, 50 / 60 Hz Peripheral bay: 100 – 240 Vac, 2.5 A max, 50 / 60 Hz NSU: 100 – 240 V, 1.0 A max, 50 / 60 Hz
Maximum Input Power	100 W Peripheral bay: 140W NSU: 25W
AC Source	90 – 264 Vac: 47 – 63Hz Peripheral bay: 90 – 130Vac NSU: 0 – 264 Vac: 47 – 63Hz

Environmental Requirements

The MX Controller should be located in an area that is dry, clean, well ventilated, well lit and readily accessible.

Operational Environment

Condition	Specification
Temperature	41° – 122°F (5° – 50 °C)
Humidity	40 – 90% relative humidity, non condensing
Maximum Heat Dissipation – fully loaded*	MX Controller: 500 BTUs per hour NSU: 200 BTUs per hour Peripheral bay: 750 BTUs per hour
Air Flow	46 cubic feet per minute at maximum fan output
Acoustic Emissions	Maximum 50 dBA continuous, 75 dB intermittent (<10% duty cycle)

* Conversion factors: one watt is equal to 3.412 BTUs per hour, one ton of refrigeration is equal to 12,000 BTUs per hour or 3.516 kilowatts, and 3/4 kilowatt hour is equal to one ton of refrigeration.



it's about **YOU**

MX Controller Front Panel

- Remote alarm port (DB-9 connector)
- Two RS-232 ports (DB-9 connectors) (Printer and Maintenance)
- Three MMC slots to support: connections to network services units (NSUs) or digital bays, and; additional embedded DSPs or embedded T1 links
- One 10 / 100 Ethernet connection via RJ-45
- Two CIM (copper interface module) ports to connect NSUs, analog service units (ASUs) or digital bays
- Alarm LEDs
- Compact Flash memory card reader
- Reset button

MX Controller Rear Panel

- Power connector
- Protective ground to ground the chassis
- Music-on-Hold connector
- Paging connector
- 25 pair Amphenol connector

MX Controller

- Six LS / CLASS circuits, upgradeable to 12
- Two ONS/CLASS circuits, upgradeable to four (Note: Message Waiting Lamp is not supported on these circuits.)
- Two DNIC circuits, expandable to 672 with the addition of SX-200 peripheral cabinets
- One dedicated Music-on-Hold port with support for additional music sources
- One dedicated paging port with support for additional paging devices
- Two power fail transfer circuits with support for additional circuits in peripheral cabinets
- One dedicated circuit for door opener relays
- Four ports of voice mail, upgradeable to 24
- Dual DSP expandable to eight
- DHCP server
- 64 Ethernet to TDM (E2T) channels
- Up to 192 IP phones
- Up to 748 mailboxes
- Up to seven digital bays supported (672 ports)

Option Modules and Service Units

- Analog option module (provides additional two ONS / CLASS and six LS / CLASS circuits)
- Dual or quad DSP modules expand voice mail, conferences and compression
- Dual FIM modules (max. two) provide support for PRI or SX-200 digital peripheral cabinets
- SX-200 NSU (max. four) provides dual link PRI connections

- T1 module dual link (max. two embedded)
- Analog Service Unit (ASU) (max. two) each provides 24 ONS / CLASS lines
- Quad CIM (max. two)

Phones Supported

- Mitel 5201 IP Phone
- Mitel 5207 IP Phone
- Mitel 5215 IP Phone
- Mitel 5220 IP Phone
- Mitel Superset™ 4001
- Mitel Superset™ 4015
- Mitel Superset™ 4025
- Mitel Superset™ 4125
- Mitel Superset™ 4150
- Mitel Superset™ 400 Series phones, Superset 3 / 4 DN phones (migration upgrades)
- Mitel Superconsole 1000

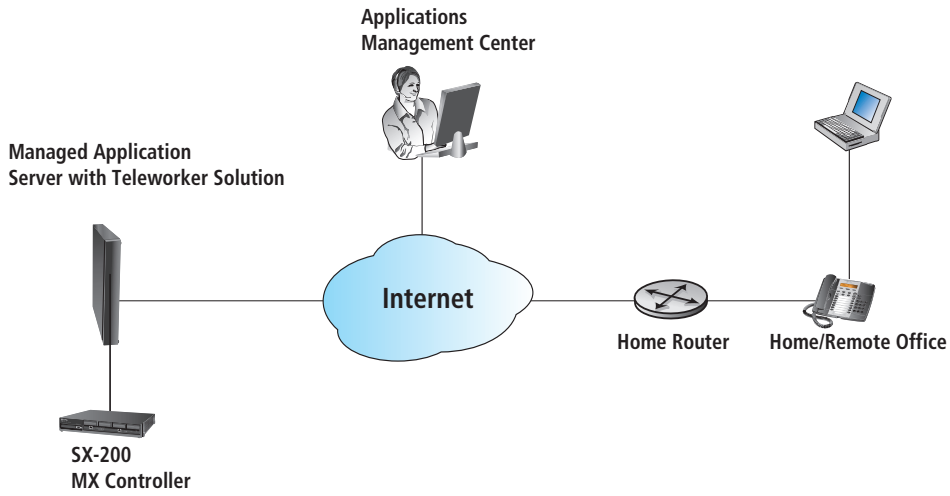
Other Peripheral Supported

- Mitel 5303 Conference Phone
- Mitel 5310 IP Conference Unit
- Mitel 5412 Programmable Key Module (PKM)
- Mitel 5448 Programmable Key Module (PKM)

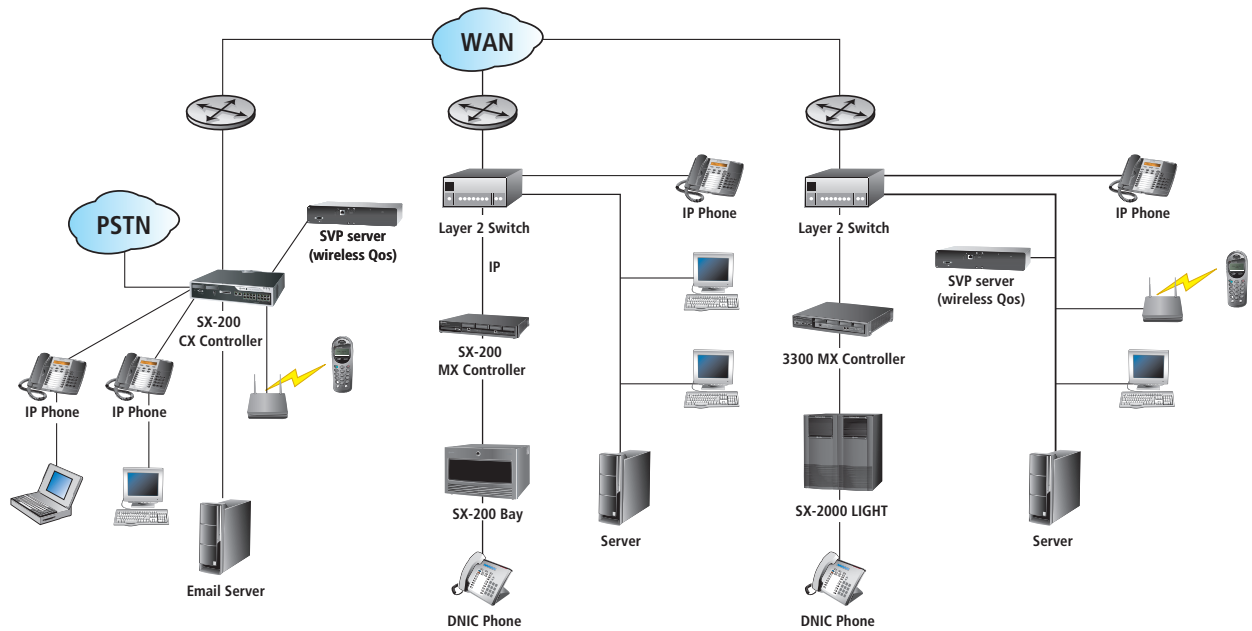
Applications Supported

- SMTP (email) client
- Notification of E-911 calls, three different addresses at once
- Standard Unified Messaging
- Integrated voice mail option, forward voice mail to email
- Notification of alarms, three different addresses at once
- On-demand maintenance logs
- IP networking (24 IP channels and up to 100 systems per network)
- 802.11 wireless voice application
- Automatic Call Distribution (ACD)
- Auto / multi-level auto attendant
- Tenanting
- MyAdministrator (for system administration)
- Mitel Managed Application Server (MAS)
- Mitel Teleworker Solution
- Mitel Office Server Suite
- Mitel Managed VPN
- Mitel 6100 Contact Center Solutions

SX-200 MX Controller with Teleworker Solution



Mixed Mitel IP Networking Example



MITEL it's about YOU

Companies don't make decisions, people do. That is why Mitel is leading the way toward a new and more personalized approach to communications for enterprise and small business. Our innovative solutions, applications and desktop appliances enable you to access, process and control your communications and information naturally, simply and efficiently.

Our solutions allow you to collaborate over distance and time and to interact with your customers, colleagues and partners as never before. By combining the power of voice, data and video over converged high speed networks, Mitel provides you with flexible and personalized tools that let you leverage the latest advances for personal and organizational advantage.

North America

Tel: (613) 592 2122
1 800 648 3579

Latin America

Tel: (613) 592 2122
1 800 648 3579

UK

Tel: +44 (0)1291 430000
Fax: +44 (0)1291 430400

France

Tel: +33 (0)1 61 37 00 90
Fax: +33 (0)1 61 37 00 99

Benelux

Tel: +31 (0)30 85 00 030
Fax: +31 (0)30 85 00 031

Italy

Tel: +39 02 2130231
Fax: +39 02 21302333

Germany, Switzerland, Austria

Tel: +49 (0)211 5206480
Fax: +49 (0)211 52064899

Portugal and Spain

Tel: +34 91 350 66 33
Fax: +34 91 350 70 14

Middle East

Tel: +971 4 3916721
Fax: +971 4 3915288

South Africa

Tel: +27 82 559 8688
Fax: +27 11 784 6916

Asia-Pacific

Tel: +852 2508 9780
Fax: +852 2508 9232

www.mitel.com



THIS DOCUMENT IS PROVIDED TO YOU FOR INFORMATIONAL PURPOSES ONLY. The information furnished in this document, believed by Mitel to be accurate as of the date of its publication, is subject to change without notice. Mitel assumes no responsibility for any errors or omissions in this document and shall have no obligation to you as a result of having made this document available to you or based upon the information it contains.

M MITEL (design) is a registered trademark of Mitel Networks Corporation. All other products and services are the registered trademarks of their respective holders.

© Copyright 2005, Mitel Networks Corporation. All Rights Reserved.

GD 8440 PN 51006918RC-EN